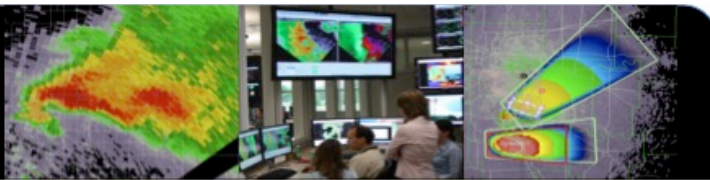


Advanced **WAS*IS** workshop
at the
National Weather Center
and the
Hazardous Weather Testbed



weather & society * integrated studies: changing what **WAS** to what **IS** the future of integrated weather studies

Advanced **WAS*IS** Workshop

Beyond Storm Warnings: A collaboration between stakeholders, the National Weather Service, and the Hazardous Weather Testbed



AGENDA

September 15-17, 2008
Norman, Oklahoma



Monday, September 15, 2008

- 8:00 a.m.** Leave Residence Inn & Country Inn for **Stephenson Center (101 David L. Boren Boulevard, across from the National Weather Center)**
- 8:15 a.m.** Check-in, Registration **Stephenson Center, Seminar Room (1st floor)**
- 8:30 a.m.** National Severe Storms Laboratory: Welcome and how we are bringing **WAS*IS (Weather & Society Integrated Studies)** into the National Weather Service (**Jeff Kimpel**)
- 8:45 a.m.** Welcome from NOAA central region team meeting sponsors (**Mike Hudson**)
- 8:55 a.m.** Brief introductions (Everyone)
Participants' 1-minute introduction:
Name, position, and affiliation
- 9:25 a.m.** Introduction to the Hazardous Weather Testbed (**Dave Andra**)
- 9:35 a.m.** Overview: **WAS*IS** & **SSWIM** (Social Science Woven into Meteorology)

Why Advanced **WAS*IS** at the Hazardous Weather Testbed?
Workshop motivation, goals, challenges, ground rules
(**Eve Gruntfest**)
- 9:50 a.m.** Break

- 10:15 a.m.** CASA's (Center for Collaborative Adaptive Sensing of the Atmosphere) stakeholder collaborations: End-to-End-to-End Work (**Brenda Philips**)
- 10:35 a.m.** Better concepts for forecast evaluation (**Harold Brooks**)
- 11:00 a.m.** Introducing the "big challenges" list (**Kevin Scharfenberg**)
- 11:15 a.m.** Ways we think this workshop can help the Hazardous Weather Testbed and an Introduction to Probabilistic Hazard Information (**Kristin Kuhlman & Travis Smith**)
- 11:45 a.m.** Lunch (*provided*)– in small groups at **Stephenson Center**
- 1:00 p.m.** Introduction to the Enterprise, Alabama scenario
- 1:30 p.m.** Enterprise Scenario, 4 groups:
 (1) County/City wide; Emergency Management
 (2) High Vulnerability; Hospital/Elementary School
 (3) Private Sector / Media / Communications
 (4) General Public, wide-range of unspecified end-users
- 3:45 p.m.** Break
- 4:00 p.m.** First impressions of the scenario from each group. Topics to consider. **Moderator: Randy Peppler**
- 5:00 p.m.** National Weather Center/ Hazardous Weather Testbed Tours
(two groups: Group A: (1) &(2); Group B: (3) & (4) from scenario)
- 5:30 p.m.** Icebreaker and Dinner @ the NWC catered by Ted's Café Escondido. **National Weather Center: 1st floor director's boardroom & patio**

Tuesday, September 16, 2008

- 8:15 a.m. Arrive, get settled
- 8:30 a.m. Slept-on-it (3 a.m. revelations) – Considering yesterday's scenario for the future
- 9:30 am Break
- 9:45 a.m. The public and private sectors communicate to the public, getting the messages across ([Kevin Barjenbruch, NWS](#) and [Melissa Tuttle Carr, The Weather Channel](#))
- 10:10 a.m. Addressing vulnerable populations- Recent lessons learned ([Rebecca Jennings, FEMA](#))
- 10:30 a.m. Topic selection for group break-out; Identifying common themes and action items. Possible questions:
Moderator: [Eve Gruntfest](#)
- *How can warnings better meet multiple needs?*
 - *How can we communicate across numerous cultures, time scales, spatial scales?*
 - *How can we be prepared to take credit, not just blame for events that don't go well?*
 - *How can we better learn from experiences across agencies, and jurisdictional boundaries?*
 - *Do we need new definitions of "lead time"?*
 - *What socially relevant verification measures can we use?*
- 10:45 a.m. Break into groups (5-ish people each group: 6-8 groups)
- noon Lunch (*provided*) - small groups at [Stephenson Center](#)
- 1:15 p.m. Report back and discussion **Moderator: [Andrea Schumacher](#)**
- 2:30 p.m. Break
- 3:00 p.m. Panel discussion: Reflections based on earlier work and workshop discussions: ([Sara Ruth](#), [Tanja Fransen](#), [Alan Stewart](#), [Christina Muller](#), [Karen Pennesi](#))
- 4:15 p.m. Panel Q&A – Changing the culture –New ways ahead for the Hazardous Weather Testbed – ([Dave Andra](#), [Kevin Manross](#), [Kristin Kuhlman](#), [Greg Stumpf](#), [Travis Smith](#))
- 5:15 p.m. Setting the stage for Wednesday final sessions
- 5:30 p.m. Adjourn
- 6:15 p.m. Advanced **WAS*IS** reception Dinner ([Himalaya's Restaurant](#), 814 [N. Berry, Norman](#))

Wednesday, September 17, 2008

- 8:15 a.m.** Arrive, get settled
- 8:30 a.m.** Slept-on-it (3 a.m. revelations)
- 8:45 a.m.** Updating and refining the "challenges" list, clarifying new directions **Moderator: Kevin Scharfenberg**
- 9:15 a.m.** Revisiting the workshop goals – (specifics) how did we do?
Moderator: Kristin Kuhlman
- 10:00 a.m.** Where do we go from here – Funding and timelines
Additional projects with the Hazardous Weather Testbed

Additional avenues for the **WAS*IS** braintrust - New ideas to develop, short-term and long-term
- 11:15am** Open discussion and questions - Strategies for effectively moving ahead
- noon** Adjourn